

The Meddleton Family

by **Nerida (Meddleton) Fewkes**

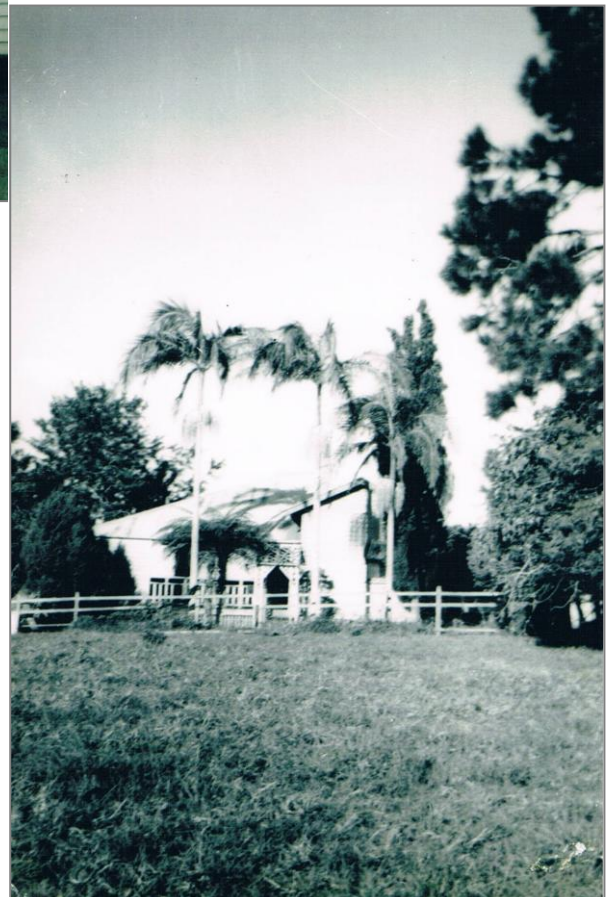
My family owned "Glengarriffe" a Jersey stud farm on 199 acres on Witta Road.

Nan and **Ray Meddleton** sold this in 1972 and moved to Nambour in 1973. The farm was originally owned by my Grandfather **R.V.D. Cox** and was left to Mum. Dad was from Brooloo. They had a family of four children, my older sister **Jennifer**, myself – **Nerida, Kerryn** and only son **Graham**. We attended Witta State School for Primary and then to Maleny High School. The first Witta Primary School was actually on our farm and then shifted to its' current position.

I attended Maleny High School until 1965, finishing Junior. I then started working as an assistant in nursing in the old Memorial Hospital under **Matron Laharty**, until I turned 17 and started training at Gympie. I came back to Maleny Hospital after 12 months, then went to New Zealand with **Hilary Penny** for three years. I worked in Nambour Hospital for a while and then sick of working weekends, decided to work in Collin's Café in the main street of Nambour. From there I went to Tasmania, worked a while and came home to set off to do the fruit in Berri, South Australia and then over the Nullarbor to work in Perth. We spent several years in Western Australia, coming back in 1978 to marry and had two boys **Brent** and **Troy** who live in Brisbane. I now have two Grandchildren and one on the way. I work as a medical receptionist and am looking forward to retiring and becoming a grey nomad.



The cottage on the farm. Just up from the bails.



Our home on Middleton Lane