



MALENY MEN'S SHED Inc NEWSLETTER



7 Bryce Lane, Maleny P.O. Box 5, Maleny 4552 ABN 54 929 953 562

Newsletter # 25 – April 2019

Editor: Warne Wilson 54999974 warnew@bigpond.com

FROM THE PRESIDENT: RICHARD TOWNSEND



Hi Guys, Lots happening ... grants sought for slab for the army shed, security screens for the existing shed and a new drop saw, thanks to Peter and Keith.

Bit of a chance to add some funds to our coffers coming up if we again do the overflow parking for the show, and the metal workers are organising a raffle for the dinner tickets we received for helping with the Spicer's overflow parking. Hope some of you will help with the show parking and of course sell some of the raffle tickets to your wealthy mates :-)

Wayne has ordered more shirts and patches and they should be available soon.

Nice to see our membership is growing; that is fantastic, and welcome to our new members.

President Ric.

FROM THE SMITHY: KEVIN HOWELL

Bells bells bells!



We are still making cowbells. Russel Davies, a retired structural draughtsman, who has drawn up maps etc. of the village in the past, has drawn up bell templates on his AUTOCAD machine.

In order to have them marked on solid material, alloy and plastic, Boris Daniljcenko agreed to use his CAD/CAM machine. Russel's CAD file was transferred via a DXF file and it worked perfectly. After some modifications to tweak the design we have stable templates to mark out from. Russel is assisting in the blacksmith's shop and has made a couple of bells, learning some basic blacksmithing skills in the process.

Blacksmith 1606

COMPUTER TIPS AND TRICKS: DENNIS HENSBY



WINDOWS SCREEN TIPS

Since Windows v1, Windows users have always been able to customise their screen view to some degree. The trick has always been discovering that you *can* modify certain things, then remembering just how to do that. Windows 10 provides for lots of customisation, some useful, some just cool. The trick still is trying to find or remember where the setting is.

I have previously advised on setting up a personalised photo or a rotating theme for your desktop. While that is probably the most popular customisation for computer desktops, I won't go through it again here. So here are some more settings for you to try out.

ICON SIZES: Right-click anywhere on your desktop. Click View then choose Large, Medium or Small icons to suit your eyesight. You can also change icon size on the taskbar. Right-click on the Taskbar and click Lock the Taskbar to unlock it. Right-click on the Taskbar again and choose Taskbar settings, click Use small taskbar buttons to on. If you want even more screen space you can click on Automatically hide the taskbar in desktop mode – don't worry it will reappear whenever you move the mouse to the bottom edge of the screen. Don't forget to re-lock the taskbar after you have finished experimenting.

TASKBAR: The taskbar is highly configurable to get it just how you like it. For a start, you can place it on any of the 4 sides, not just at the bottom of the screen. Unlock the Taskbar then you can simply drag and drop it to the top or either side of the screen, or back to the bottom. You can customise the icons shown on the right hand end via Settings > Personalisation > Taskbar > Select which icons appear on the taskbar. Turn off Always show all icons ... then you can select individual icons to show or turn off. The icons on the left end of the taskbar are different. This is where you set up your favourite applications to be always visible and with single click access, as against double clicking an icon on the desktop, which may not be visible. To add an app to the taskbar, just drag and drop a desktop icon onto the taskbar (must be unlocked). To remove an icon, right click it and choose Unpin from taskbar.

MOUSE CURSOR: Hard to spot the little rodent on the screen? Make it easier either of two ways. Go to Settings > Devices > Mouse > Additional Mouse Options > Pointer Options. Under Visibility, try out ticking the boxes for Display pointer trails or Show location of pointer when I press the CTRL key. Display pointer trails works whenever you move the mouse and was originally introduced many years ago for laptop LCD screens, but it still works well on today's better screens. To get Show location... to work just press the CTRL key (bottom left of keyboard). Every press of the Ctrl key causes concentric rings to home in on the mouse cursor. Cool, eh! While you are in the Mouse Properties area, try out some of the other settings to find ones that you may like.

SCREEN SIZES: You can have fun playing with the standard size of things on the screen. Go to Settings > Ease of Access > Display. Play with the settings for Make text bigger and Make everything bigger. You can always undo these settings by going back to the 100% settings.

These are only a few of the possibilities, but they are the ones most likely to be useful. Be adventurous and try a few out. You can always go back to the standard settings if you prefer.

If you have any questions on this topic, or have a topic you would like to see covered in the future, please email Dennis at dennishensby@bigpond.com."



FROM THE ENGINEERS: KEVIN TREVARTHIN

The metal workers (or at least some of them) have been assisting the Historical Society with work on Glenferna in preparation for its opening, and set up secure storage under the house.



Syd Collie and Lindsay Hay have again been exercising their design and fabrication skills in the completion of some very sturdy gate frames from gal SHS. When attached to the underside of Glenferna, these will provide a solid deterrent for any wayward thief who might fancy some of the goods stored there.

Similarly, Syd welded solid

brackets to Glenferna's steel posts to mount the batten rails. These consumed 8 electrodes per post so they aren't going anywhere any time soon!

While we were disappointed that we weren't successful in our grant application for a mill-drill, every cloud has a silver lining. Soon after that news, Laurie found an excellent bargain on Gumtree for a larger mill, and we were able to secure it at less than half the price of the new one that we'd applied for the grant for. It's actually a better machine than the one that we'd hoped for, and it's in good condition having done very little work. It's no lightweight, so installing it will be an interesting challenge, but we hope to have it in place soon.



It completes the big-ticket items for the machine shop and will now allow us to undertake more complex and challenging jobs (though for some of us still on our L plates, the simple jobs can be challenging!).

But we're lucky to have three experienced and qualified machinist/fitters in Laurie, Syd and Lindsay now in the team.

FROM THE WOODIES: WARNE WILSON



I made a quick visit on Tuesday after an op a couple of weeks earlier. I was delighted to find a positive and cheerful atmosphere and everyone hard at work on their projects.

We have little time left now to complete the toys for the Maleny Wood Expo on May 4th 5th and 6th. Gary McFarlane is making kits of parts using small freezer bags, Harry Malcher is still sanding little boats, and Dennis Hensby is keeping tabs to make sure well over a thousand parts balance up to produce complete kits.

Requests from the public for woodwork have led to projects, one of which has been completed by Dennis, and others are under way under the care of Ashley Williams and Malcolm Baker.

Leon Russoniello, after turning over seventy dolls for the little girls to decorate at the Expo, is now experimenting with more challenging lathework as he advances his skills.

We still need volunteers to help in the children's woodwork tent which is larger this year to cope with the demand. (Please add your name to Malcolm's list or contact me for a session or two). Those who have taken part in previous years will attest to an enjoyable and fulfilling sense of achievement.

As we have done each year, we are partnering with the Blackall Range Woodcrafters, giving opportunities for members of both groups to get to know each other as they work together. The Montville Woodies, (The Blackall Range Woodcrafters Guild) have also been hard at work making their share of toys and pot plant baskets.



The proposed awning at the western end of our shed has now been completed! This will enable us to store timber outside and will provide an area out of the weather for sanding, and, occasionally, noise-making thicknessers and planers. A big thank you to Malcolm, all those who helped, and those who managed the successful grant application.

FROM THE HISTORICAL SOCIETY – DESLEY MALONE

Maleny's War Honour Flag

This flag was created at the time of the First World War as a reward to recognise Australian towns and districts which subscribed twice their quota of funds for the Commonwealth Government's seventh war loan in 1918. The funds were used to help cover the costs of Australia's World War I expenditure.



Maleny & District's subscription was an average of £5/4/10 per head of the population, more than double the average quota and won the highest honour possible.

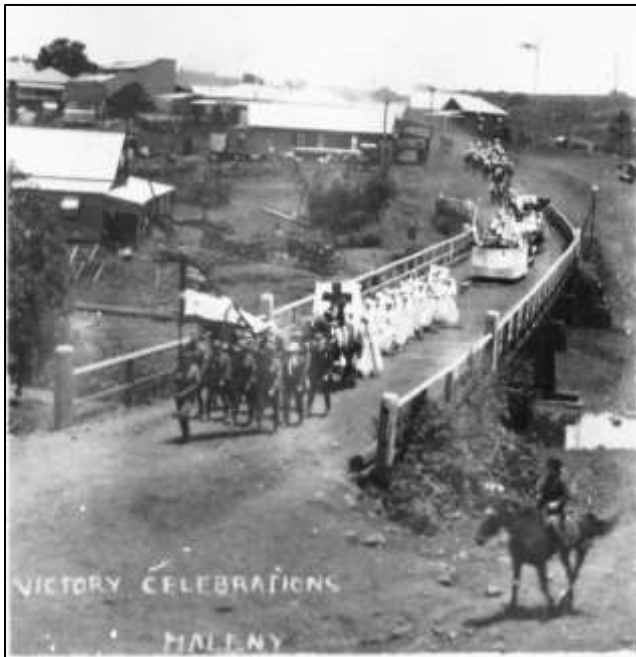
Stripes were added to display the amount given by various districts and Maleny & District's flag had 3 stripes.

The original flag was made of wool with silk bars and got lost. The RSL had a replica flag made for the Victory Parade last Remembrance Day. The flag was carried by the returned soldiers at the original parade in 1918 and by members of the Light Horse team a century later.

The RSL presented the flag to the Historical Society in December 2018 and it's presently stored in our archive and will be displayed as requested.

(Please see photographs on next page).

Maleny's War Honour Flag (Continued from previous page)



MALENY WOOD EXPO ROSTER 4TH 5TH & 6TH MAY

With thanks to the members who have put their names down to help man the Children's Workshop Tent we are short of helpers in the afternoons Saturday 4th, Sunday 5th and Monday 6th of May from 12 Midday till 3.00 pm. We need two more for each of those sessions.

If you can help, please contact:

Warne: Phone 54999974, Email: warnew@bigpond.com; or
Malcolm: Phone 54942961, Email: nanmal@caloundra.net.



UPCOMING COMMUNITY EVENTS 2019

ANZAC DAY - Maleny + Witta - April 25th - See details closer to the date.

St George's-in-the-Hills concert series: with Kim Kirkman April 27th - 2p.m. St George's Anglican Church Maleny Ph. 54999130

Maleny Arts and Craft - Autumn Fair - May 3rd - 6th Maleny Community Centre.

Quota Club of Maleny Quilt Show - May 4th - 5th Maleny High School.

Maleny Wood Expo - May 4th - 6th - Maleny Showgrounds

Maleny Show Society - Show Ball - May 31st + June 1st Maleny Show-grounds.

Sustainable Futures Expo - June 22nd between 9am and 3p.m. - Maleny Showgrounds.

KnitFest - July 6th + 7th Maleny..

Maleny Garden Club "Gardening on the Edge" June 8th and 9th, Maleny District.

Maleny Historical Soc. "Glenferna Grand Opening" June 15th Maleny Historical Village.

Maleny Singers "The Gondoliers" (G & S) June 15th - 23rd Maleny Community Centre

Maleny Music Muster - September 22nd to 29th - Maleny Pioneer Village

Maleny Arts and Craft - Christmas Fair - November 22nd + 23rd Maleny Community Centre

St George's Anglican Church Christmas Concert - November 30th St George's Anglican Church

(To include information in this events list simply email to denvergail1@gmail.com)

You don't have to be an engineer to appreciate this story! :-)

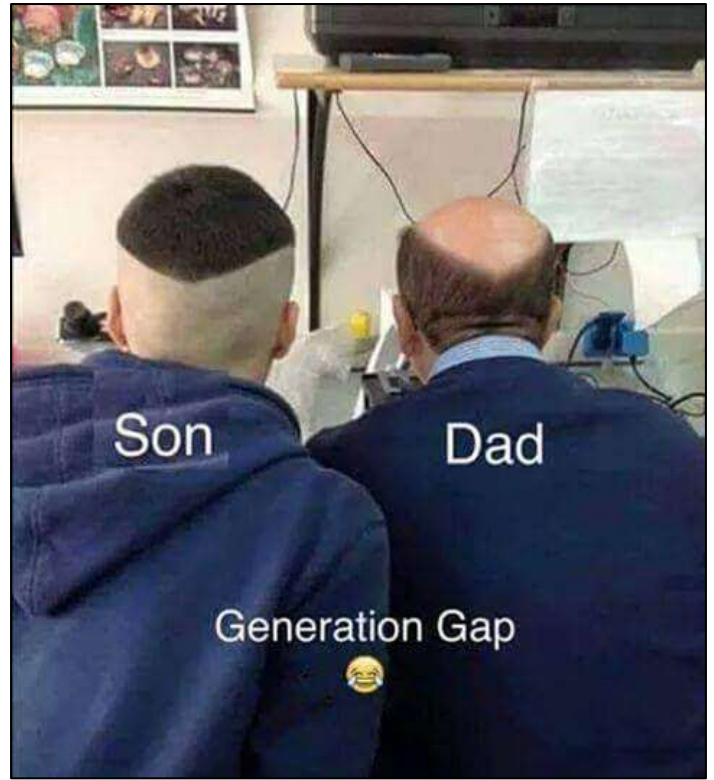
Procter & Gamble had a problem. They sometimes shipped empty Crest toothpaste boxes without the tube inside. This challenged their perceived quality with the buyers and distributors. Understanding how important the relationship with them was, the CEO of the company assembled his top people. They decided to hire an external engineering company to solve their empty boxes problem. The project followed the usual process: budget and project sponsor allocated, RFP, and third-parties selected. Six months (and \$8 million) later they had a fantastic solution – on time, on budget and high quality. Everyone in the project was pleased.

They solved the problem by using a high-tech precision scale that would sound a bell and flash lights whenever a toothpaste box weighed less than it should. The line would stop, someone would walk over, remove the defective box, and then press another button to re-start the line. As a result of the new package-monitoring process, no empty boxes were being shipped out of the factory.

With no more customer complaints, the CEO felt the \$8 million was well spent. He then reviewed the line statistics report and discovered the number of empty boxes picked up by the scale in the first week was consistent with projections, however, the next three weeks were zero! The estimated rate should have been at least a dozen boxes a day. He had the engineers check the equipment, they verified the report as accurate.

Puzzled, the CEO travelled down to the factory, viewed the part of the line where the precision scale was installed, and observed just ahead of the new \$8 million dollar solution sat a \$20 desk fan blowing the empty boxes off the belt and into a bin. He asked the line supervisor what that was about.

"Oh, that," the supervisor replied, "Bert, the kid from maintenance, put it there because he was tired of walking over, removing the box and re-starting the line every time the bell rang."



MODEL T.

I will build a motor car for the great multitude. It will be large enough for the family, but small enough for the individual to run and care for. It will be constructed of the best materials, by the best men to be hired, after the simplest designs that modern engineering can devise. But it will be so low in price that no man making a good salary will be unable to own one – and enjoy with his family the hours of pleasure in God’s great open spaces. HENRY FORD 1907



Photo credit: Wirawat Lian-udom

It's easy to forget what an amazing gift life really is. Our lives are nothing but a cosmic blink. Even our seemingly all-encompassing world is just tiny blue dot circling an average sized star spiralling around a galaxy of 200-400 billion stars, which itself is just one galaxy among billions more. Yet for one brief moment, we get to experience the wonders of existence, of consciousness.



"The difference between genius and stupidity is that genius has its limits." ~ Albert Einstein



That's all for this month friends, and to those not feeling the best, please get better and come back soon – we miss you.

Warne Wilson Editor, warnew @bigpond.com Ph. 54999974

